

# Revolution Baler Operators Manual



## Introduction

- The Revolution Baler is a small hand operated baler for baling plastic, cardboard, paper, shredded paper, etc.
- Needing no power source the Revolution Baler can be used anywhere & is ideal where space is limited or ceiling height is low.
- Anyone operating the Revolution Baler should firstly read these instructions & familiarise themselves with the operation as outlined paying special regard to any safety warnings.

Specifications	
Machine Dimensions (W x D x H)	23" x 28" x 47" (71" open)
Bale Size (W x D x H)	17" x 14" x 26"
Bale Weight	Up to 75 Lbs.*
No. of Tie Straps	2
Weight	106 Lbs.
Optional Extras	Wheels & Axles Bolt down brackets

\*Bale weights vary depending on material. Bale weight of 75lbs achieved on silage wrap.



## Set Up

A good solid, level surface that is well lit is required for this equipment.  
Ample room is required around the baler to allow for threading, filling, removing bales etc.

## Safety

Only persons who have read & fully understand these instructions should operate this equipment.  
No loose clothing or jewellery should be worn while operating the equipment.  
Safety glasses and gloves should be worn at all times.

### USE CAUTION WHEN

- Opening and closing machine door.
- Filling material into baler.
- Compacting the material.
- Tying the bale.
- Removing bale from machine.



**Always Wear Safety Protection**



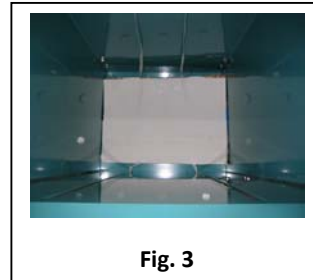
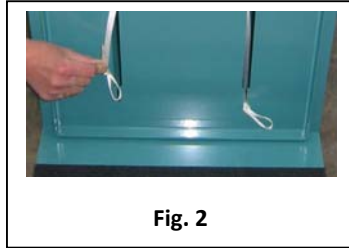
During operation of this equipment Pinch Points may occur.  
It is important to keep hands clear of the bale chamber & compaction mechanism at all times.  
Never operate the machine with other people in the vicinity.

## Threading

To thread the baler cut 2 lengths of bale strap, each approx. 9' long. Place a non slip loop in one end of each of the straps & place both straps in the machine as shown in Fig. 1

The non slip loop will be held in the slot at the bottom of the door (Fig.2) with the remainder of the strap going out over the back of the bale chamber.

If baling material like shredded paper or small plastic it may be necessary to place a piece of cardboard in the bottom of the chamber to act as a base for the bale (Fig. 3)



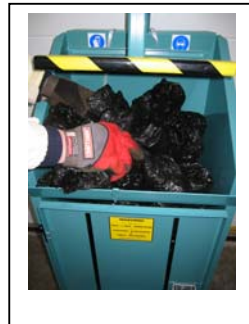
## Baling

Place material to be baled into the baler as generated & compact each time.

Always use both hands on the compaction lever & always leave in the down / compacted position to keep pressure on material. Placing both feet on the front stabilization plate helps stabilize the machine during opening & closing of the compaction arm.

Use caution when returning the compaction lever to the upper position as it may be under pressure.

Keep adding material until it is no longer possible to compact more. You are now ready to tie off bale.



## Tying

Raise compaction plate to upper position.

Pull bale straps from back of machine over top of compacted material. If necessary place piece of cardboard over top of compacted material under the straps.(fig. 1)

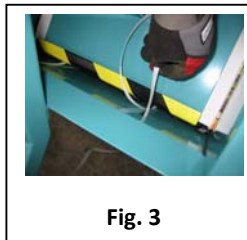
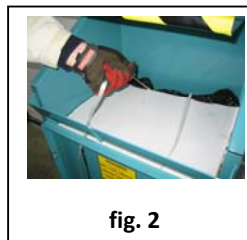
**PULL ALL SLACK STRAP FROM BACK OF CHAMBER** & pass ends of strap through slots in front door. It may be necessary to compact the material again to allow straps pass through front slots. (fig. 2 & 3)

Always compact the material & leave the compaction plate in the lower locked position before tying.

Make sure all slack has been pulled out of each strap.

Pass straps coming down front of machine through loops at bottom of door & pull to take up any slack before placing a few tight knots in the straps. (fig. 4)

Fig. 5 shows both straps tied ready for bale removal.



## Bale Removal

With the bale tied as described in the previous segment:

Release the compaction lever & place in the upper position.

Using caution open the door – The door may be under pressure.(fig. 1)

Place hands behind top of bale & push forward, then pull bale from chamber using the two bale straps.(fig. 2 & 3)

**ALWAYS USE CAUTION WHEN REMOVING BALES**

If bale is tight in chamber have a second person assist with removal.



fig. 1



fig. 2



fig. 3

**USE CAUTION WHEN HANDLING BALES**

## Maintenance

Check all nuts & bolts regularly – tighten if necessary.

If compaction lever / plate fails to stay in the upright position when open it may be necessary to tighten nut & bolt as in picture below using two 19mm wrenches.

Tightening the tension spring adjuster using a 17mm wrench will also help.

The compaction arm lock down catch is adjustable & should be checked occasionally to ensure correct alignment - Adjust if necessary.

19mm nut & bolt



17mm spring  
Adjuster nut



Lock down catch



Quick Pak Inc.  
1100 North 28<sup>th</sup> Street  
Tampa, FL 33605  
USA.

Tel: 813 242 6995  
Fax: 813 242 6985

[www.quickpakinc.com](http://www.quickpakinc.com)  
mike.cunningham@quickpakinc.com

Local Dealer for Revolution Baler:

Blank box for local dealer information.